



ROYAL BALI CELADON

Where fashion meets function for distinctive dining experience.

mg HOTEL SUPPLIES



- 📍 MG HOTEL SUPPLIES KSA
- ☎️ +966 5588 2 6363
- ✉️ Adminksa@mghotelsupplis.com
- 🌐 mg.supplies.ksa

Chef Hector Jimenez Bravo is one of the world's renowned chef, restaurateur and masterchef judge. Through his creations he has served and delighted many world's famous people like the Queen of Great Britain, Elizabeth II, former U.S President George W. Bush, former British prime minister Tony Blair and many more. He also owns one of the most famous culinary academy and respected educational organization in Europe. He has proven that in the hands of a great chef like him unique tableware can be transformed into poetry on the table.



These photos are courtesy of Hector Jimenez Bravo & Nam Kyiv



the art of food
**POR
TFO
LIO**

These photos are courtesy of Gregoire Berger



Chef Gregoire Berger was ranked 23rd on the Best Chef Award in Milan in 2019. He has more than 15 years of diverse experiences in hospitality, from Michelin star restaurants to small and big luxury resorts. Since 2014 he is the mastermind of the iconic underwater restaurant, Ossiano at Atlantis, The Palm. In 2019, the team and himself counted more than 30 awards in diverse categories.



These photos are courtesy of Amaury Guichon



Chef Amaury Guichon is a world-renowned pastry chef who has been teaching master classes around the world for more than seven years while developing a niche specialty in chocolate. Widely hailed as the most followed pastry chef on Instagram, Chef Amaury currently has more than 5 million followers and counting.

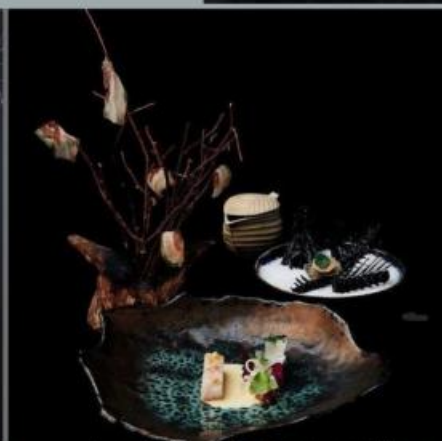
Chef Stefan van Sprang is a Two-star Michelin chef of Restaurant Aandepoel is known for his light, inventive and eclectic cooking style. Each of his dish is exquisitely plated with delightful tableware to serve top-level dishes through his creative mind that are a feast for both the eyes and palate.



These photos are courtesy of Stefan van Sprang



These photos are courtesy of Restaurant Sens & Jeroen Achtien



Chef Jeroen Achtien The year of amazing experience gained working in one of the world's best restaurant De Librije has charted talented chef Jeroen to start on his own journey as an executive chef for Sens fine dining in Vitznauerhof Hotel and Wald Hotel Davos where in just 3 years he and his team have earned two Michelin stars and received 17 points Gault Millau. Fermentation, creativity and unusual flavour combinations, that's a reason a lot of people are visiting his restaurants. He is the creator of a cuisine whose daring originality redefines and enlarges current concepts of gastronomy.





These photos are courtesy of Nina Tarasova



Chef Nina Tarasova studied pastry in France and is now a very creative and influential chef who's famous for creating original desserts with new combinations of flavours and new styles of desserts. For her, it is impossible to imagine a day without a good dessert.

Her style is characterized by the constant search for balance between natural ingredients, colour and sublime taste, with an emphasis on the elegance of the presentation and on spectacular creations with chocolate.



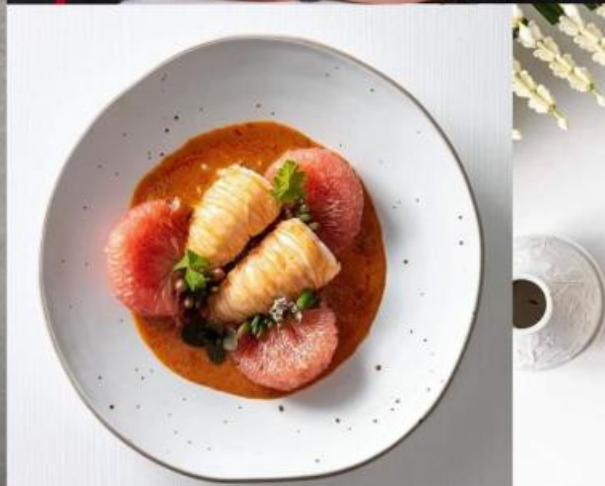
These photos are courtesy of Nina Tarasova



Chef Bee Satongun on focusing on the flavours of her heritage recipes that she presented through her Michelin starred restaurant Paste Bangkok that was recently listed as one of Asia's 100 best Restaurants for 2021. Chef Bee is currently Thailand's leading and most awarded Thai Chef. In 2018, Chef Bee Satongun was named elit Vodka's Asia's Best Female Chef by the World's 50 Best Restaurants. She has been invited to cook at culinary events such as the annual Taste of Paris and Hong Kong Wine & Dine Festival 2018.



These photos are courtesy of Bee Satongun



Chef Christopher Cipollone opening a restaurant during a world wide pandemic added an additional layer of complications. This roller coaster experience has finally paid off as chef Cipollone and his entire team receive their first Michelin Star for his newly opened Francie Brooklyn restaurant in 2021.

These photos are courtesy of Christopher Cipollone



These photos are courtesy of The Londoner Macao



Miang of lobster, mangosteen and herbs served on betel leaves



Soft shell crab with pomelo and betel leaf salad



These photos are courtesy of Maya Ubud & Gildas Perin

Chef Gildas Perin is the corporate executive chef at Maya Resorts, in Sanur & Ubud Bali.



These photos are courtesy of Reynold Poernomo



Chef Reynold Poernomo was a finalist in Masterchef's Australia 2020 Back to Win. He was also named a finalist in the Gault & Millau Pastry Chef of the Year awards in 2017.



This photo is courtesy of Mandif Warokka

ROYAL BALI CELADON

Artisan Collection

One-of-a-kind tableware is a vessel that will add extra appealing value to your food presentation. Our tableware design exchange – toward food entertainment that help chefs to add high drama to the story of the dishes. We create serve-ware that extends the story told by the food. We understand that the power of tableware lies within its capacity to enhance the dining experience, without taking the spotlight away from the dishes. With our Artisan ranges, you will be able to create a food presentation that satisfies your own wants and needs as we designed our pieces with you in mind – ensuring every piece is of high quality, durable and with subtle memorable detailing for exceptional culinary experiences. We will assist you in curating the perfect tableware experience.



Coral Saucer
18,5 x 15,5 x 3,5 cm
Glugu Black Glossy (G. 071)



Coral Plate D. 26,5 cm
Dia. 26,5 H. 2 cm
Glugu Black Glossy (G. 071)



Coral Bowl D. 20 cm
Dia. 19,5 H. 6,5 cm (500 ml)
Glugu Black Glossy (G. 071)



Wavy Border Coral Bowl
18,5 x 15,5 x 7,5 cm (180 ml)
Glugu Black Glossy (G. 071)



Presentation Bowl 24 cm w/ Coral Relief
Dia. 24 H. 5 cm (500 ml)
Glugu Black Glossy (G. 071)



Wavy Border Coral Plate
32 x 28,5 x 4,5 cm
Glugu Black Glossy (G. 071)



Sauce on Coral Plate
Dia. 26,5 H. 2 cm
Glugu White Glossy (G. 258)



Coral Plate D. 26,5 cm
Dia. 26,5 H. 2 cm
Glugu White Glossy (G. 258)



Coral Bowl D. 20 cm
Dia. 19,5 H. 6,5 cm (500 ml)
Glugu White Glossy (G. 258)



Wavy Border Coral Bowl
18,5 x 15,5 x 7,5 cm (180 ml)
Glugu White Glossy (G. 258)



Presentation Bowl 24 cm w/ Coral Relief
Dia. 24 H. 5 cm (500 ml)
Glugu White Glossy (G. 258)



Wavy Border Coral Plate
32 x 28,5 x 4,5 cm
Glugu White Glossy (G. 258)



Rustic Plate D. 29,5 cm

Dia. 29,5 H. 4,5 cm

Rustic White (G. 138) & Milk White (G. 057)



Tapas Briquet "CMW"

16 x 7 x 7 cm

Rustic White (G. 138)



Dessert Plate w/ Embroidery D. 28 cm

Dia. 28,3 H. 2,5 cm

Rustic White (G. 138)



Deep Bowl D. 18 cm w/ Border

Dia. 18 H. 8 cm (230 ml)

Rustic White (G. 138)



Serombotan Bowl D. 16 cm

Dia. 16 H. 10 cm (700 ml)

Body Trad Sprayed (Semi Gloss) (G.243) & Gold (G. 233)



Salt & Sugar Holder D. 8,5 cm "TMJ"

Dia. 8,2 H. 6,5 cm

Body Trad Sprayed (Semi Gloss) (G.243) & Glugu Gold (G. 234)



Boomerang Plate D. 27 cm

Dia. 27 H. 3 cm

Glugu White Glossy (G. 258) & Gold (G. 233)



Small Bowl Lines Texture

Dia. 6,5 H. 3 cm

Matte White (G. 056) & Gold (G. 233)



Bowl Appetizer

Dia. 15 H. 4,5 cm (350 ml)

Transparent Gold (G. 178)



Salad Bowl Deep D. 14 cm

Dia. 14 H. 6 cm (400 ml)

Transparent Gold (G. 178)



Salad Bowl Deep "PRM"

Dia. 21 H. 6 cm (1000 ml)

Transparent Gold (G. 178)



Round on Round Plate D. 26 cm

Dia. 26 H. 2,2 cm

Metallic Gold Transparent (G. 247)



Bowl Hole Handle D. 7 cm
7 x 6 x 4 cm
Green Gold (G. 160)



Soup Bowl D. 18 x T. 7,5 cm "PRM" & Salad Bowl Deep D. 22 cm
Dia. 18,5 H. 7,5 cm (1200 ml) & Dia. 22 H. 5 cm (1200 ml)
Green Gold (G. 160)



Small Bowl D. 13 cm "TMS"
Dia. 12,5 H. 6 cm (300 ml)
Body Stone Black, Green Gold (G. 160)



Round Plate
Dia. 17,5, Dia. 24 & Dia. 27 cm
Green Gold (G. 160)



Moon Rock Plate P. 32,5 cm
32 x 28 x 5,5 cm
Body Stone Black, Green Gold (G. 160)



Gold Plate D. 16 cm "CMW"
Dia. 16 H. 5,7 cm (Center : Dia. 6,2 H. 0,3 cm)
Page 10 *Stone Black Speckles (G. 124), Green Gold (G. 160)*



Bowl Stone w/ Lid Round Handle JDF
 Dia. 14,5 H. 10,5 cm (370 ml)
Stone Black, Green Gold (G. 160)



Soup Cup w/ Lid
 Dia. 9 H. 8 cm (150 ml)
Stone Black Speckles (G. 124), Gold (G. 233)



Slant Round Bowl
 Dia. 26 H. 6 cm
Stone Black Speckles (G.124), Gold (G. 233)



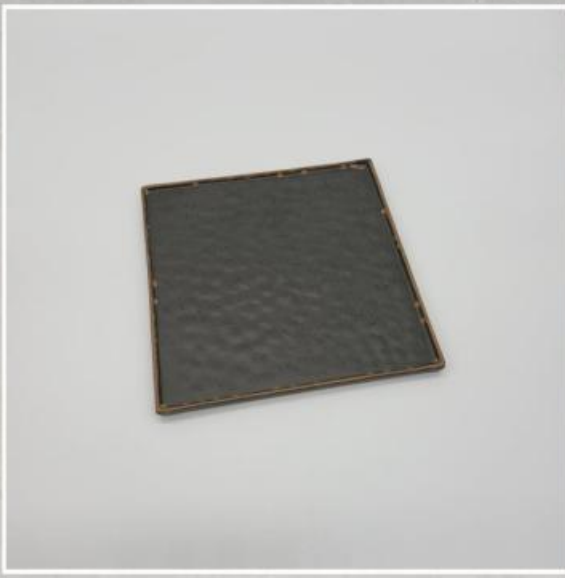
Bowl Tumpuk D. 12 cm "RTV"
 Dia. 12,3 H. 6,5 cm (300 ml)
Stone Black Speckles (G. 124), Gold (G. 233)



Bowl 3 Foot D. 15 cm w/ Lid
 Dia. 15 H. 10,5 cm (700 ml)
Stone Black Speckles (G. 124), Gold (G. 233)



Pedestal Plate D. 22 cm "SP" & Pedestal Plate D. 14 cm "SP"
 Dia. 22 H. 3,5 cm & Dia. 14 H. 3 cm
Stone Black Speckles (G. 124), Gold (G. 233)



Square Plate w/ Wavy Relief "CMW"
19 x 19 x 1,5 cm
Stone Black Speckles (G. 124), Gold (G. 233)



Creamer T. 13 cm "SLO"
Dia. 5,2 H. 13 cm (150 ml)
Stone Black Speckles (G.124), Gold (G. 233)



Small Bowl Stone D. 7 cm
Dia. 7 H. 3,5 cm
Stone Black, Gold (G. 233)



Tumis Bowl
S : 16 x 14,8 x 7,8 cm (220 ml)
L : 22,5 x 20,5 x 9 cm (540 ml)
Stone Black Speckles (G. 124), Gold (G. 233)



Paper Bowl D. 21,5 cm
21,5 x 19 x 5,5 cm
Stone Black Speckles (G. 124), Gold (G. 233)



Paper Bowl D. 24 cm
24 x 23 x 6,5 cm
Stone Black Speckles (G.124), Gold (G. 233)



2 Lip Steak Plate D. 25 cm

36 x 27 x 3,5 cm

Stone Black Speckles (G. 124), Gold (G. 233)



Broken Rustic Bowl D. 23 cm

23 x 23 x 11 cm

Stone Black Speckles (G. 124), Gold (G. 233)



Round Plate 21 cm "RTV"

Dia. 21 H. 3 cm

Stone Black Gold



Flat Round Plate D. 30,5 cm

Dia. 29,5 H. 0,8 cm

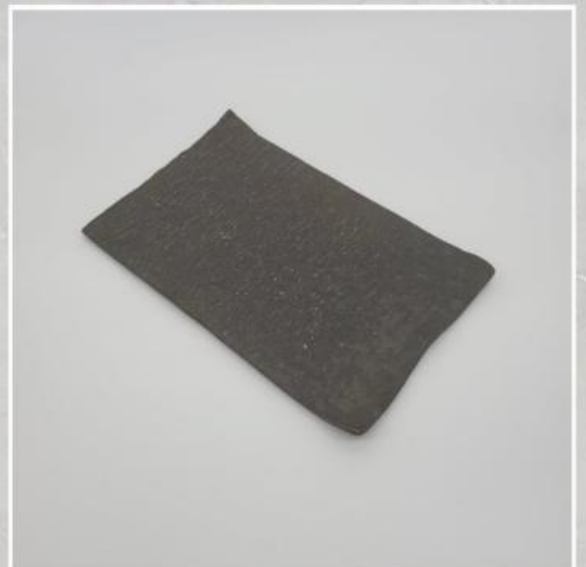
Stone Black Gold



Steak Plate Single Handle D. 22 cm

32 x 22 x 2,5 cm

Rusted Iron (G. 224), Gold (G. 233)



Grilled Platter "TMJ"

35 x 22 x 2,5 cm & 24 x 14 x 1,2 cm

Rusted Iron (G. 224)



B&B Iron Plate D. 16 cm "TMJ"
Dia. 16 H. 1,5 cm
Rusted Iron (G. 224)



Rustic Bowl P. 28 cm "CMW"
28,5 x 28 x 6,7 cm
Rusted Iron (G. 224)



Creamer "RTV"
8 x 7 x 5,5 cm (100 ml)
Rusted Iron (G. 224)



Stone Round Sauce Dish D. 7 cm "RA"
Dia. 7,5 H. 3 cm
Rusted Iron (G. 224)



Round Plate
Dia. 21, Dia. 24 & Dia. 27 cm
Rusted Iron (G. 224)



Tapas Briquet "CMW"
16 x 7 x 7 cm
Rusted Iron (G. 224)



Creamer P. 9,4 cm "PRM"
9,4 x 6 x 5,3 cm (100 ml)
Rusted Iron (G. 224)



Coupe Round Bowl Anyam Lidi D. 20 cm
Dia. 20 H. 4 cm
Rusted Iron (G. 224)



Flat Round Plate Anyam Lidi D. 26 cm
Dia. 26 H. 0,6 cm
Rusted Iron (G. 224)



Round Sauce Anyam Lidi D. 9,5 cm
Dia. 9 H. 1,5 cm
Rusted Iron (G. 224)



Round Wooden Bowl D. 20 cm
Dia. 20 H. 5 cm
Rusted Iron (G. 224)



Round Wooden Plate D. 27 cm
Dia. 27 H. 4 cm
Rusted Iron (G. 224)



Rice Bowl D. 12 cm Anyam Lidi
Dia. 12 H. 5,8 cm (200 ml)
Burnished Gold (G. 233)



Round Plate 21 cm Anyam Lidi
Dia. 21 H. 2,5 cm
Burnished Gold (G. 233)



Round Plate 27 cm Anyam Lidi
Dia. 26,5 H. 2,3 cm
Burnished Gold (G. 233)



Pasta Bowl D. 26 cm Anyam Lidi
Dia. 26 H. 5 cm
Glugu Black Glossy (G. 071) & Gold (G. 233)



Boomerang Plate D. 27 cm
Dia. 27 H. 3 cm
Glugu Black Glossy (G. 071) & Gold (G. 233)



Rice Bowl JDF
Dia. 13 H. 5 cm (320 ml) & Dia. 15 H. 7 cm (400 ml)
Burnished Gold (G. 233)



Square Plate 23 x 23 cm
23 x 23 x 3 cm
Burnished Gold (G. 233)



Oval Plate Kawung 32 x 19,5 cm
32,5 x 19 x 3 cm
Burnished Gold (G. 233)



Round Plate w/r Kawung
Dia. 25 & Dia. 30 cm
Burnished Gold (G. 233)



Rect. Plate w/r Kawung
"S" 21 x 13 x 2,5 cm
"M" 24,5 x 18 x 3,5 cm
Burnished Gold (G. 233)



Krisan Bowl D. 19,5 cm
Dia. 19 H. 2,5 cm
Stone Black, Burnished Gold (G. 233)



Royal Round Plate 23 cm "RTV"
Dia. 23 H. 2,5 cm
Burnished Gold (G. 233)



Round Wooden Plate D. 27 cm
Dia. 27 H. 3,7 cm
Burnished Gold (G. 233)



Pebble Rock Plate
Dia. 20,5, Dia. 26 & Dia. 29 cm
Burnished Gold (G. 233)



Diamond Stone Bowl w/ Lid
17 x 16,5 x 12 cm
(G. 238)



Bowl D. 13 cm w/ Stand "CMW"
Dia. 13,2 H. 7 cm (250 ml)
(G. 238)



Small Donut Bowl D. 13 cm "CMW"
Dia. 12,5 H. 3,2 cm
(G. 238)



Round Sauce D. 9 cm "YT"
Dia. 9 H. 2 cm
(G. 238)



Tumis Oval Plate P. 28,5 cm "TMS"
28 x 19 x 3,3 cm
(G. 238)



Demitasse Cup & Drink Coaster D. 9 x T. 0,8 cm
Dia. 6 H. 5,5 cm (80 ml) & Dia. 9 H. 0,8 cm
(G. 238)



Soya Sauce Dish D. 7 cm "YT"
Dia. 7 H. 2 cm
(G. 238)



Porridge Bowl D. 15 cm "CP"
Dia. 15 H. 6,7 cm (450 ml)
(G. 238)



Round Plate
Dia. 21, Dia. 24 & Dia. 27 cm
(G. 238)



SP Cruets w/ Lid "SLO"
11,5 x 8 x 4,7 cm
(G. 238)



Square Saute Pan 14 x 14 cm w/ Handle "CP"
23,5 x 13,7 x 3 cm
(G. 238)



Broken Tall Bowl D. 18 cm
17,5 x 16 x 17 cm
Rustic Stone Black & (G. 238)



Coupe Pasta Bowl D. 22 cm
Dia. 22 H. 4,5 cm (1000 ml)
(G. 238)



Oval Plate P. 27 x L. 16 cm "RTV"
27 x 16 x 4,2 cm
Rustic Brown 2 (G. 206), Gold (G. 233)



Bowl SBKT D. 17 cm
Dia. 17 H. 6 cm (500 ml)
Rustic Brown Gold (G. 136 & G. 233)



Round Plate D. 24 cm "RTV"
Dia. 24 H. 2,8 cm
Rustic Brown Gold (G. 136 & G. 233)



Sauce 2 Compt P. 12 cm
12 x 6 x 2,5 cm
Glugu Gold (G. 234)



Sauce 3 Compt 18 x 8 cm
17,5 x 7,5 x 2,5 cm
Glugu Gold (G. 234)



Mug Tamas & Round Saucer 13,5 cm "Ulir"
Mug : Dia. 8,5 H. 7 cm (250 ml)
Saucer : Dia. 13,5 H. 1,5 cm
Glugu Gold (G. 234)



Tampin Plate Bentoya
17 x 18 x 7 cm
Glugu Gold (G. 234)



Round Plate
Dia. 21, Dia. 24 & Dia. 27 cm
Glugu Gold (G. 234)



Rect. Plate Rampress
29 x 26 x 2,5 cm
Glugu Gold (G. 234)



This photo is courtesy of Restaurant Sens & Jeroen Achtfien

ROYAL BALI CELADON

Lifestyle Collection

Our tableware is functional work of art that can be used to enhance the look of every dish that is served in it and makes the whole presentation appeal to the eyes. Our speciality is making dresses from clay and transforming them into distinctive tableware to enhance your food presentation through meticulous attention to hand touched details. Because when style and taste get together they will become art elements on the table. We produce fabulous dresses for your food and render your tasty cuisine ready to impress your customers with a unique presentation that entices their appetite even more. We can integrate traditional techniques of pottery with up-to-date designs and ultimately deliver our one-of-a-kind products straight from our artisans into the hands of our customers.



Bowl Ulir Pesok D. 18 cm "HTM"
18,5 x 18 x 8 cm (1000 ml)
Ghost White (G. 092)



Bowl Wavy Lip D. 10 cm "RTV"
Dia. 10 H. 5,5 cm (200 ml)
Ghost White (G. 092)



Creamer 9 x 7 cm "ISA"
9 x 7,5 x 7 cm (150 ml)
Ghost White (G. 092)



Pebble Rock Plate
Dia. 20,5, Dia. 26 & Dia. 29 cm
Ghost White (G. 092)



Hollow Plate D. 25 cm
Dia. 25 H. 5 cm
Ghost White (G. 092)



Salad Plate Coupe D. 24 cm "PRM"
Dia. 23,5 H. 3.5 cm
Ghost White (G. 092)



Bottom Shangrila
6,5 x 6 x 8 cm (130 ml)
Ghost White (G. 092)



Plate Saji Dessert
Dia. 17,5 H. 2 cm & Dia. 26 H. 2 cm
Ghost White (G. 092)



Bowl w/ 2 Handles
Dia. 18 H. 7 cm (600 ml) & Dia. 20,5 H. 7 cm (750 ml)
Ghost White (G. 092)



Mahachi Hama Plate
26 x 26 x 3 cm
Body Trad, Ghost White & Rim Exposs (G.092)



Round on Round Hologram
Dia. 27,5 H. 2,5 cm
Rustic White (G. 138), Yellow (G. 007)



Krisan Bowl
Dia. 26,5 H. 4,5 cm
Matte White Orange Skin (G. 056)



Coral Soyu Dish D. 8,5 cm
Dia. 8,3 H. 2,5 cm
Glugu White Glossy (G. 258)



Round Wok 23,5 cm "BMD"
Dia. 23,5 H. 6 cm
Glugu White Glossy (G. 258)



Presentation Bowl 24 cm/ #03 Bowl PSGourmet 24 cm
Dia. 24 H. 5 cm (500 ml)
Glugu White Glossy (G. 258)



Jigsaw Bowl D. 14,5 cm "ST"
Dia. 14,5 H. 4 cm
Matte White (G. 056) Rim Burnished Gold



Rice Bowl D. 14 cm "PRM"
Dia. 14 H. 7 cm (450 ml)
Matte White (G. 056) Rim Burnished Gold



Creamer "RTV"
8 x 7 x 5,5 cm (100 ml)
Matte White (G. 056) Rim Burnished Gold



Sauce Ulir "RTV"

Dia. 8 H. 2 cm

Matte White (G. 056) Rim Burnished Gold



Bowl Tumpuk D. 12 cm "RTV"

Dia. 12,3 H. 6,5 cm (300 ml)

Matte White (G. 056) Rim Burnished Gold



Paper Bowl D. 21,5 cm

21,5 x 19 x 5,5 cm

Matte White (G. 056) Rim Burnished Gold



Paper Bowl D. 19 cm

Dia. 19 H. 7 cm

Matte White (G. 056) Rim Burnished Gold



Paper Bowl D. 24 cm

24 x 23 x 6,5 cm

Matte White (G. 056) Rim Burnished Gold



Soyu Sauce Pourer D. 5,4 cm

Dia. 5,4 H. 6,6 cm (100 ml)

Cream Semi Glossy (G. 188) & Moss (G. 282)



Metal Plate
 Dia. 28 H. 4 cm
Cream Semi Glossy (G. 188)



F & C 9" (Salad Plate)
 Dia. 23 H. 4,2 cm
Ivory Dots Antique (G. 283)



Slant Round Bowl
 Dia. 26 H. 6 cm
Ivory Dots Antique (G. 283)



Clay Rock Plate
 26,5 x 22,5 x 5,5 cm
Matte White Rim Antique (G. 284)



Lobster Plate P. 21 x L. 12 cm "CMW"
 21 x 12 x 3 cm
Matte White Rim Antique (G. 284)



Creamer Pesok
 8 x 6 x 7,5 cm (120 ml)
Rustic Brown, Matte White (G. 219)



Small Donut Bowl D. 13 cm "CMW"
Dia. 12,5 H. 3,2 cm
Body Trad, Nusa Dua Rim Brown



Bowl Appetizer
Dia. 15 H. 4,5 cm
Body Trad, Nusa Dua Rim Brown



Broken Short Bowl D. 18 cm
Dia. 18 H. 7 cm
Body Trad, Nusa Dua Rim Brown



Broken Tall Bowl D. 18 cm
17,5 x 16 x 17 cm
Body Trad, Nusa Dua Rim Brown



Mahachi Hama Plate
26 x 26 x 3 cm

Body Trad, Glugu White Glossy Gradation (G. 285) Page 28



Hollow Bowl Ulir D. 21 cm
Dia. 20,5 H. 5 cm

Body Trad, Glugu White Doff (G. 286)



Mahachi Hama Plate
26 x 26 x 3 cm
Body Trad, Glugu White Doff (G. 286)



Diamond Stone Bowl w/ Lid
17 x 16,5 x 12 cm
Stone Palimanan (G. 287)



Slant Round Bowl
Dia. 26 H. 6 cm
Reactive Brown Rim Orange (G. 288)



Yarn Bowl D. 12 cm
Dia. 11,5 H. 11 cm (250 ml)
Rustic Milk Coffee (G. 261)



Slant Bowl "CMW"
Dia. 16 H. 9 cm
Ethnic 1, Black Bubbles (G. 114)



Main Dish
20 x 20 x 3 cm & 28 x 28 x 3 cm
Ethnic 1, Black Bubbles (G. 114)



Pedestal Plate D. 14 cm "SP" & Pedestal Plate D. 22 cm "SP"
Dia. 14 H. 3 cm & Dia. 22 H. 3,5 cm
Cinnamon (G. 129)



Main Dish
20 x 20 x 3 cm & 28 x 28 x 3 cm
Cinnamon (G. 129)



Pedestal Bowl D. 18 cm "ENA"
Dia. 18 H. 8 cm
React ND (G. 045)



Round Plate
Dia. 21, Dia. 24 & Dia. 27 cm
Mottled Brick Red (G. 215)



Small Donut Bowl D. 13 cm "CMW"
Dia. 12,5 H. 3,2 cm
Rustic Brown 2 (G. 206)



Square Pickle Holder
6 x 6 x 2,5 cm
Ethnic 2 (G. 066)



Hollow Bowl Ulir D. 21 cm
Dia. 20,5 H. 5 cm
Metallic (G. 097)



Rustic Flat Round Plate D. 25 cm
Dia. 24,5 H. 1 cm
Metallic (G. 097)



Half Stone Plate
33 x 17,5 x 3 cm
Metallic (G. 097)



Tapas Briquet wo/ Legs
16,5 x 7 x 6 cm
Metallic (G. 097)



Wood Plate
26 x 25 x 1,5 cm
Metallic (G. 097)



Tanggo Rock Bowl
27 x 23,5 x 7,2 cm & 30 x 28,5 x 8 cm
Metallic (G. 097)



Chinese Tea Cup w/ Lid & Saucer "ADL"

Cup : Dia. 10 H. 8,5 cm (180 ml)

Saucer : Dia. 10,6 H. 2,3 cm

Emerald Green w/ brown rim (G. 094)



Royal React Bowl 11,5 x 9,5 cm

11,5 x 9 x 9,5 cm

Crackle Green (G. 017)



Round Plate w/ 2 Handles

Dia. 25 H. 2 cm

Matte Green, Blue Speckles (G. 112)



B&B Plate D. 16 cm "TMJ"

Dia. 16 H. 0,5 cm

Matte Green, Blue Speckles (G. 112)



Sauce D. 7 T. 1,5 cm

Dia. 7 H. 1,5 cm

Matte Green, Blue Speckles (G. 112)



Round Plate D. 24 cm "RTV"

Dia. 24 H. 3 cm

Matte Green (G. 064) Rim Orange



Bowl Ulir Pesok D. 18 cm "HTM"

18,5 x 18 x 10 cm (1300 ml) & 18,5 x 18 x 8 cm (1000 ml)
Matte Green (G. 064) Rim Orange



Rect Plate

32,5 x 18 x 4 cm
Matte Green, Blue Speckles (G. 112) Rim Orange



02 Plate PSGourmet

29,5 x 25,5 x 4,5 cm
Matte Green, Blue Speckles (G. 112) Rim Orange



Jigsaw Bowl D. 14,5 cm "ST"

Dia. 14,5 H. 4 cm
Mottled Green (G. 220)



Creamer Hologram T. 11,5 cm

Dia. 6 H. 11,5 cm (150 ml)
Mottled Green (G. 220)



Round on Round Hologram

Dia. 27,5 H. 2,5 cm
Mottled Green (G. 220)



Small Bowl D. 10 cm "CMW"
Dia. 10 H. 5,5 cm (200 ml)
Green Ghost (G. 066)



Small Bowl D. 13 cm "TMS"
Dia. 13 H. 6 cm (300 ml)
Green Starbuck (G. 1331)



Salad Plate Coupe D. 24 cm "PRM"
Dia. 23,5 H. 3,5 cm
Green Ghost (G. 066)



Latte Cup 220 ml "BMD"
Dia. 9 H. 7 cm (220 ml)
(G. 133)



Hollow Plate D. 25 cm
Dia. 25 H. 5 cm
(G. 133)



Royal React Bowl 11,5 x 9,5 cm
11,5 x 9 x 9,5 cm
(G. 133)



Jigsaw Bowl D. 14,5 cm "ST"
Dia. 14,5 H. 4 cm
(G. 133)



Bowl Hype D. 18 cm
Dia. 18 H. 6 cm (750 ml)
(G. 133)



Rustic Bowl D. 21 cm (Urchin Bowl)
Dia. 21,5 H. 4,5 cm
(G. 133)



Coral Bowl Center 13 cm "BMD"
Dia. 22 H. 3,2 cm
(G. 133)



Coral Bowl D. 20 cm
Dia. 19,5 H. 6,5 cm (500 ml)
(G. 133)



Presentation Bowl w/ Coral Relief
Dia. 24 H. 5 cm (500 ml)
(G. 133)



Main Dish
28 x 28 x 3 cm
React Blue (G. 025)



Pedestal Dish
Dia. 18 H. 12 cm
Antique Blue (G. 024)



Bowl Donburi
Dia. 15,5 H. 9 cm (800 ml)
Antique Blue (G. 024)



Bowl w/ 2 Handles
Dia. 18 H. 7 cm (600 ml) & Dia. 20,5 H. 7 cm (750 ml)
React Blue 2 (G. 144)



Main Dish
20 x 20 x 3 cm & 28 x 28 x 3 cm
Matte Black Bubbles (G. 244)



Plate Saji Dessert
Dia. 17,5 H. 2 cm & Dia. 26 H. 2 cm
Matte Black Bubbles (G. 244)



Bowl Hole Handle D. 7 cm

7 x 6 x 4 cm

Stone Black Speckles (G. 124)



Hollow Plate D. 25 cm

Dia. 25 H. 5 cm

Stone Black Speckles (G. 124)



Tanggo Rock Bowl

27 x 23,5 x 7,2 cm & 30 x 28,5 x 8 cm

Stone Black Speckles (G. 124)



Deep Bowl D. 18 cm "CMW"

Dia. 17,5 H. 7 cm (220 ml)

Stone Black Speckles (G. 124)



Mosaic Bowl

Dia. 24 H. 11 cm

Stone Black (G. 289)



Milk Zen Stone

9,5 x 7 x 6 cm (150 ml)

Stone Black (G. 289), Ethnic (G. 041)



Small Bowl Stone D. 7 cm
Dia. 7 H. 3,5 cm
Glugu Black Doff (G. 290)



Stone Hollow Oval Plate P. 27 cm w/ Ring
26,5 x 14 x 3,5 cm
Glugu Black Doff (G. 290)



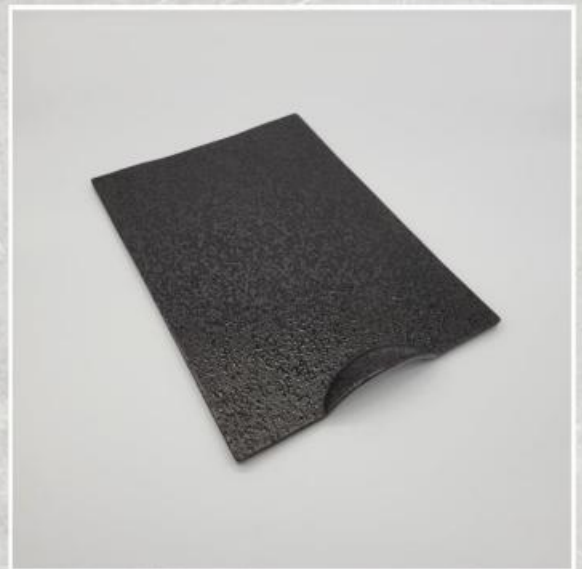
Curva Stone Bowl D. 24 cm
Dia. 23 H. 5 cm
Glugu Black Doff (G. 290)



Stone Pedestal Bowl D. 18 cm
Dia. 17,5 H. 7,5 cm
Glugu Black Doff (G. 290)



Stone Mini Bowl D. 9 cm "RA"
Dia. 9 H. 3 cm
Glugu Black Doff (G. 290)



Rect. Plate P. 32 x L. 23 cm "BNV"
32 x 23 x 1 cm
Glugu Black Glossy (G. 071)



Mug & Saucer Graha

Mug : Dia. 8,5 H. 8,5 cm (160 ml)
Saucer : 18,5 x 13 x 2 cm
Glugu Black Glossy (G. 071)



Pedestal Sate Warmer

22,5 x 11 x 10,5 cm
Glugu Black Glossy (G. 071)



Pebble Rock Plate

Dia. 20,5, Dia. 26 & Dia. 29 cm
Matte Black (G. 035) Rim Orange



Krisan Bowl

Dia. 26,5 H. 4,5 cm
Matte Black (G. 035) Rim Orange



Presentation Bowl D. 24 cm w/ Coral Relief

Dia. 24 H. 5 cm (500 ml)
Matte Black (G. 035) Rim Orange



Metal Plate

Dia. 28 H. 4 cm
Matte Black (G. 035) Rim Orange



COLLECTION
Black Onyx Stone



Salad Bowl Deep D. 14 cm
Dia. 14 H. 6 cm (400 ml)
Black Onyx Stone (G. 291)



Soup Bowl D. 18 x T. 7,5 cm "PRM"
Dia. 18,5 H. 7,5 cm (1200 ml)
Black Onyx Stone (G. 291)



Presentation Bowl 24 cm
Dia. 24 H. 5 cm (500 ml)
Black Onyx Stone (G. 291)



Salad Bowl D. 26 cm "TMJ"
Dia. 27 H. 6 cm
Black Onyx Stone (G. 291)



Round on Round Plate D. 26 cm
Dia. 26 H. 2,2 cm
Black Onyx Stone (G. 291)



Latte Cup 220 ml "BMD"
Dia. 9 H. 7 cm (220 ml)
Black Onyx Stone (G. 291)



Round Plate 21 cm "RTV"
Dia. 21 H. 3 cm
Black Onyx Stone (G. 291)



Pedestal Plate D. 14 cm "SP" & Pedestal Plate D. 22 cm "SP"
Dia. 14 H. 3 cm & Dia. 22 H. 3,5 cm
Black Onyx Stone (G. 291)



B&B Plate D. 16 cm "TMJ"
Dia. 16 H. 0,5 cm
Black Onyx Stone (G. 291)



Teapot Stone 10 cm "RTV"
Dia. 11 H. 11,5 cm (400 ml)
Black Onyx Stone (G. 291)



Creamer "RTV"
8 x 7 x 5,5 cm (100 ml)
Black Onyx Stone (G. 291)



Sauce Ulir "RTV"
Dia. 8 H. 2 cm
Black Onyx Stone (G. 291)



COLLECTION
Cinnamon w/ Brown Stroke



B&B Plate D. 16 cm "TMJ"

Dia. 16 H. 0,5 cm

Cinnamon w/ Brown Stroke (G. 292)



Mug Bali w/ Handle & Saucer Gading Raya

Mug : D. 6,8 H. 5 cm (80 ml), Saucer : D. 11,7 H. 1,1 cm

Mug Tamas & Saucer Tamas

Mug : D. 8,7 H. 7,2 cm (230 ml), Saucer : D. 14,2 H. 2,3 cm

Mug Cappuccino & Saucer Tamas D. 16 cm

Mug : D. 10,6 H. 8,5 cm (400 ml), Saucer : D. 16 H. 2,1 cm

Cinnamon w/ Brown Stroke (G. 292)



Teapot Zen, Mug Bali w/ Round Handle & Saucer Gading Raya

Teapot : 19 x 15 x 13 cm (900 ml)

Mug : Dia. 6,8 H. 5 cm (80 ml)

Saucer : Dia. 11,7 H. 1,1 cm

Cinnamon w/ Brown Stroke (G. 292)



Salad Bowl Deep D. 14 cm

Dia. 14 H. 6 cm (400 ml)

Cinnamon w/ Brown Stroke (G. 292)



Soup Bowl D. 18 x T. 7,5 cm "PRM"

Dia. 18,5 H. 7,5 cm (1200 ml)

Cinnamon w/ Brown Stroke (G. 292)



Presentation Bowl 24 cm

Dia. 24 H. 5 cm (500 ml)

Cinnamon w/ Brown Stroke (G. 292)



Round Plate 21 cm "RTV"

Dia. 21 H. 3 cm

Cinnamon w/ Brown Stroke (G. 292)



Pedestal Plate D. 14 cm "SP" & Pedestal Plate D. 22 cm "SP"

Dia. 14 H. 3 cm & Dia. 22 H. 3,5 cm

Cinnamon w/ Brown Stroke (G. 292)



Round on Round Plate D. 26 cm

Dia. 26 H. 2,2 cm

Cinnamon w/ Brown Stroke (G. 292)



Sauce Ulir "RTV"

Dia. 8 H. 2 cm

Cinnamon w/ Brown Stroke (G. 292)



Salad Bowl D. 26 cm "TMJ"

Dia. 27 H. 6 cm

Cinnamon w/ Brown Stroke (G. 292)



Creamer "RTV"

8 x 7 x 5,5 cm (100 ml)

Cinnamon w/ Brown Stroke (G. 292)

COLLECTION
Charcoal Two Tones





Bowl Hype D. 18 cm
Dia. 18 H. 6 cm (750 ml)
Charcoal Two Tones (G. 294)



Round Plate Wavy D. 17 cm
Dia. 17,5 H. 1,5 cm
Charcoal Two Tones (G. 294)



Bowl Wavy Lip D. 10 cm "RTV"
Dia. 10 H. 5,5 cm (200 ml)
Charcoal Two Tones (G. 294)



Wavy Bowl D. 20 cm
19,5 x 19 x 4,5 cm (600 ml)
Charcoal Two Tones (G. 294)



Coffee Pot, Cup Coffee Pot w/ Handle & Saucer Espresso Regular

Coffee Pot : 21 x 15 x 13 cm (800 ml)

Cup : 9,3 x 9 x 5,6 cm (160 ml) & Saucer : 16 x 14 x 2,2 cm

Charcoal Two Tones (G. 294)



Small Bowl Stone D. 7 cm

Dia. 7 H. 3,5 cm

Charcoal Two Tones (G. 294)



Pedestal Wavy Dish D. 14 cm "TMJ"
Dia. 14 H. 8,8 cm
Charcoal Two Tones (G. 294)



Round Wok
33 x 27,5 x 7 cm
Charcoal Two Tones (G. 294)



Bottom Shangrila
6,5 x 6 x 8 cm (130 ml)
Charcoal Two Tones (G. 294)



Sauce on Round Plate D. 26 cm
Dia. 26,5 H. 1,8 cm
Center : Dia. 9,5 H. 1 cm
Charcoal Two Tones (G. 294)



Oval Plate 18 x 12 cm
18 x 12,5 x 2,5 cm
Charcoal Two Tones (G. 294)



Round Plate Wavy D. 26 cm
Dia. 26 H. 2 cm
Charcoal Two Tones (G. 294)

A top-down photograph of a ceramic dinnerware set. The pieces are light-colored with a speckled texture. The set includes a large shallow bowl, a medium bowl, a small bowl, a plate, a saucer, and a small pitcher. Two gold-colored spoons and a gold-colored fork are placed on the dishes. Dried grass stalks are scattered around the pieces. The background is a textured, grey surface.

COLLECTION
Djimbaran Bay



Small Bowl D. 14 cm
Dia. 14 H. 6,7 cm (450 ml)
Djimbaran Bay (G. 278)



Udon Bowl
Dia. 19,5 H. 7 cm (900 ml)
Djimbaran Bay (G. 278)



F&C (Side Plate) 7,5"
Dia. 18,5 H. 3 cm
Djimbaran Bay (G. 278)



F&C (Pasta Plate) 10,4"
Dia. 26 H. 5 cm
Djimbaran Bay (G. 278)



Round Wok D. 22 cm "BMD"
27 x 22 x 4,7 cm
Djimbaran Bay (G. 278)



Hollow Bowl Ulir D. 21 cm
Dia. 20,5 H. 5 cm
Djimbaran Bay (G. 278)



Cup Espresso 80 ml "BMD"
 Dia. 5 H. 6 cm (80 ml)
 Djimbaran Bay (G. 278)



Sugar Sachet Langsing
 10 x 6,5 x 4,5 cm
 Djimbaran Bay (G. 278)



Coffee Cup Espresso Ear Handle & Saucer Coffee Cup Espresso
 Cup : Dia 7 H. 5 cm (100 ml) & Saucer : 13,5 x 11,3 x 1,3 cm
Coffee Cup Sky Ear Handle & Saucer Coffee Cup Regular
 Cup : Dia. 9 H. 8 cm (250 ml) & Saucer : 16,5 x 14 x 2 cm
Coffee Cup Regular Ear Handle & Saucer Coffee Cup Regular
 Cup : Dia. 10 H. 9 cm (350 ml) & Saucer : 16,5 x 14 x 2 cm
 Djimbaran Bay (G. 278)



Teapot Sea Shell II
 21,5 x 15 x 12,5 cm (1000 ml)
Mug Bali w/ Handle & Saucer Coffee Cup Espresso
 Mug : Dia. 6,8 H. 5 cm (80 ml), Saucer : 13,5 x 11,3 x 1,3 cm
 Djimbaran Bay (G. 278)



Sauce 2 Compt "PM"
 12,5 x 6,5 x 3,7 cm
 Djimbaran Bay (G. 278)



Sauce 4 Compt "PM"
 25,8 x 6,5 x 4 cm
 Djimbaran Bay (G. 278)



COLLECTION
Seaweed



Bottom Shangrila
6,5 x 6 x 8 cm (130 ml)
Seaweed (G. 293)



Sugar Sachet Tamas
10 x 7 x 5 cm
Seaweed (G. 293)



Round Plate Wavy D. 17 cm
Dia. 17,5 H. 1,5 cm
Seaweed (G. 293)



Round Plate Wavy D. 26 cm
Dia. 26 H. 2 cm
Seaweed (G. 293)



Oval Plate 18 x 12 cm
18 x 12,5 x 2,5 cm
Seaweed (G. 293)



Pedestal Wavy Dish D. 14 cm "TMJ"
Dia. 14 H. 8,8 cm
Seaweed (G. 293)



Bowl Wavy Lip D. 10 cm "RTV"
Dia. 10 H. 5,5 cm (200 ml)
Seaweed (G. 293)



Bowl Hype D. 18 cm
Dia. 18 H. 6 cm (750 ml)
Seaweed (G. 293)



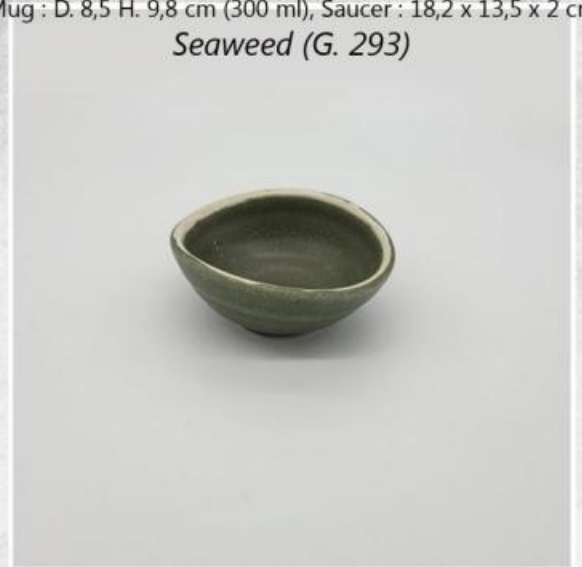
Wavy Bowl D. 20 cm
19,5 x 19 x 4,5 cm (600 ml)
Seaweed (G. 293)



Mug Lace w/ Round Handle 3 oz & Saucer Lace 3 oz
Mug : D. 6 H. 6,5 cm (100 ml), Saucer : 15 x 11 x 1 cm
Mug Lace w/ Round Handle 8 oz & Saucer Lace 8 oz
Mug : D. 7,5 H. 8,5 cm (180 ml), Saucer : 16,5 x 12,3 x 1 cm
Mug Lace w/ Round Handle 12 oz & Saucer Lace 12 oz
Mug : D. 8,5 H. 9,8 cm (300 ml), Saucer : 18,2 x 13,5 x 2 cm
Seaweed (G. 293)



Sauce Goma
Dia. 8 H. 3,2 cm
Seaweed (G. 293)



Kobachi Oval
10 x 8,5 x 4 cm
Seaweed (G. 293)